



877-2-MUELLER

www.muellerinc.com

Wildlife Guzzler Type (B)

**The Wildlife Guzzler is designed and manufactured per NRCS
design requirements**



Parts List

- A) 4 - Tan sheets 12'-3" long
- B) 2 – Tan gutter 6'-0" long
- C) 2 – Tan gutter end caps
- D) 4 – Purlin 12'-0 1/4" long (marked inside as: "Purlin")
- E) 2 – Short legs 3'-0" long (marked inside as: "Colshort")
- F) 2 – Long legs 4'-9 3/8" long (marked inside as: "Collong")
- G) 4 – Cleats for bottom of legs
- H) 2 – Rafter 12'-2" long (marked inside as: "Rafter")
- I) 36 – A307 finhead 0.5 inch x 1 inch bolts
- J) 36 – A307 nuts for finhead bolts
- K) 250 – Tan TEK #12 3/4 inch self drilling screws
- L) 8 – Gutter hangers
- M) 1 – Nut setter 5/16 inch
- N) Customer must provide concrete to secure "Water Guzzler Legs" into the ground**
- O) Water collection tank not included**

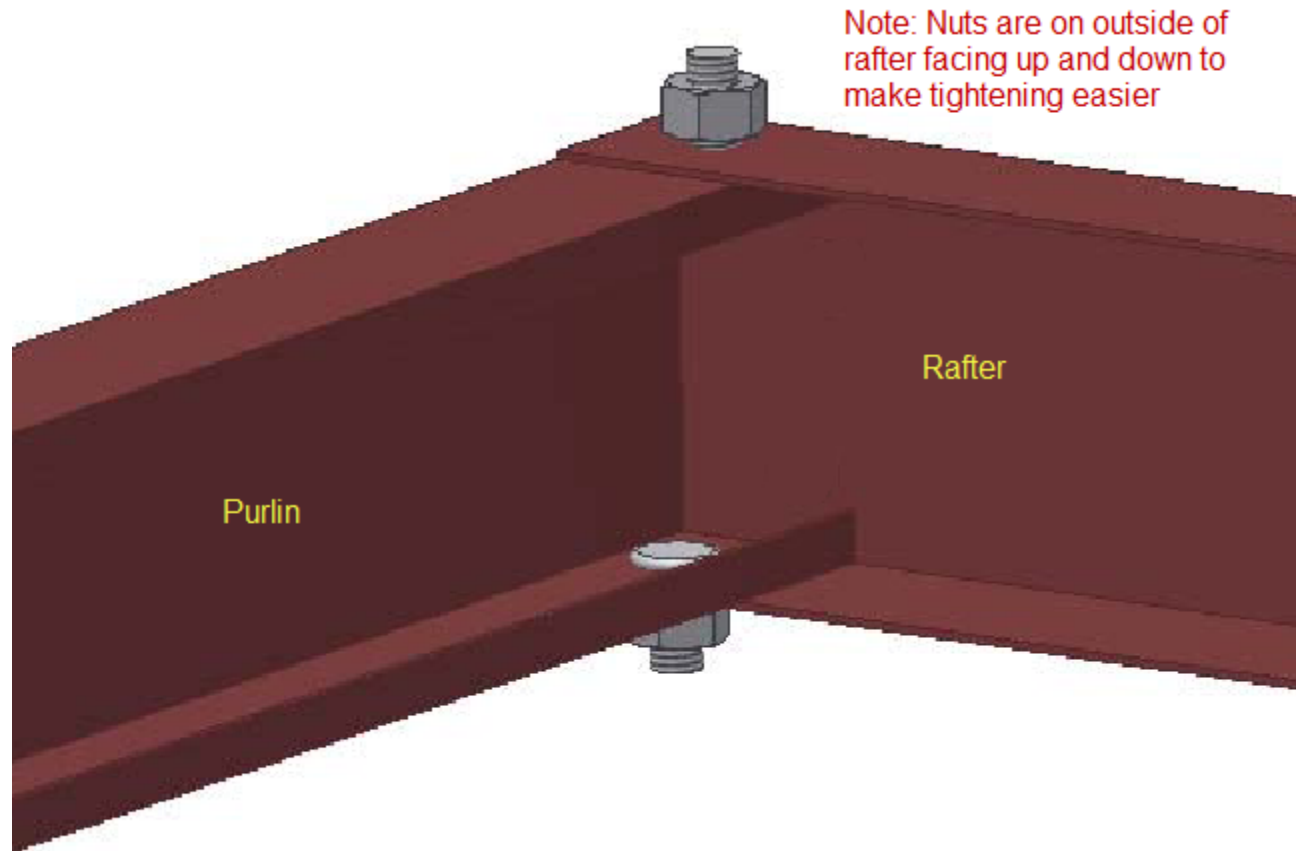
All parts are stenciled on the inside of the channel, purlin and legs. Example of this is below:



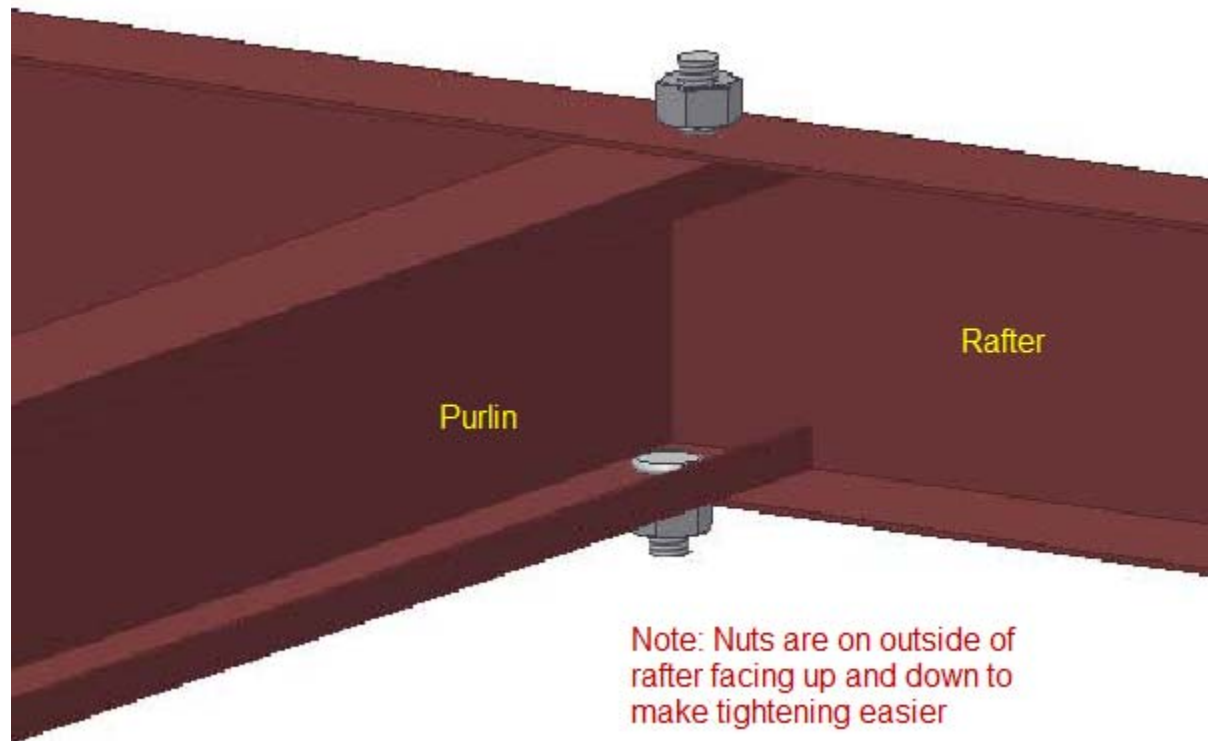
Base Layout



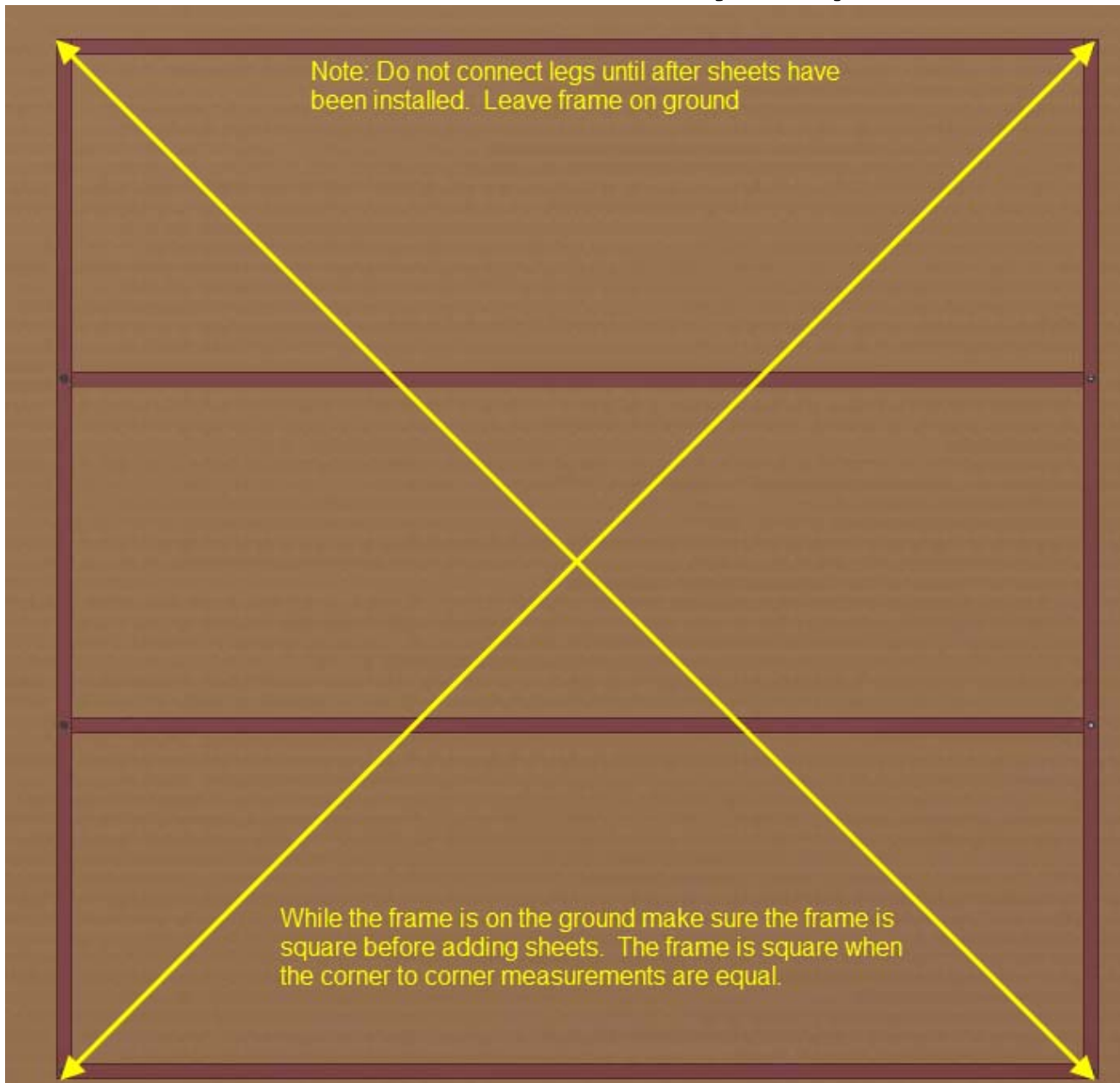
Corner Connections



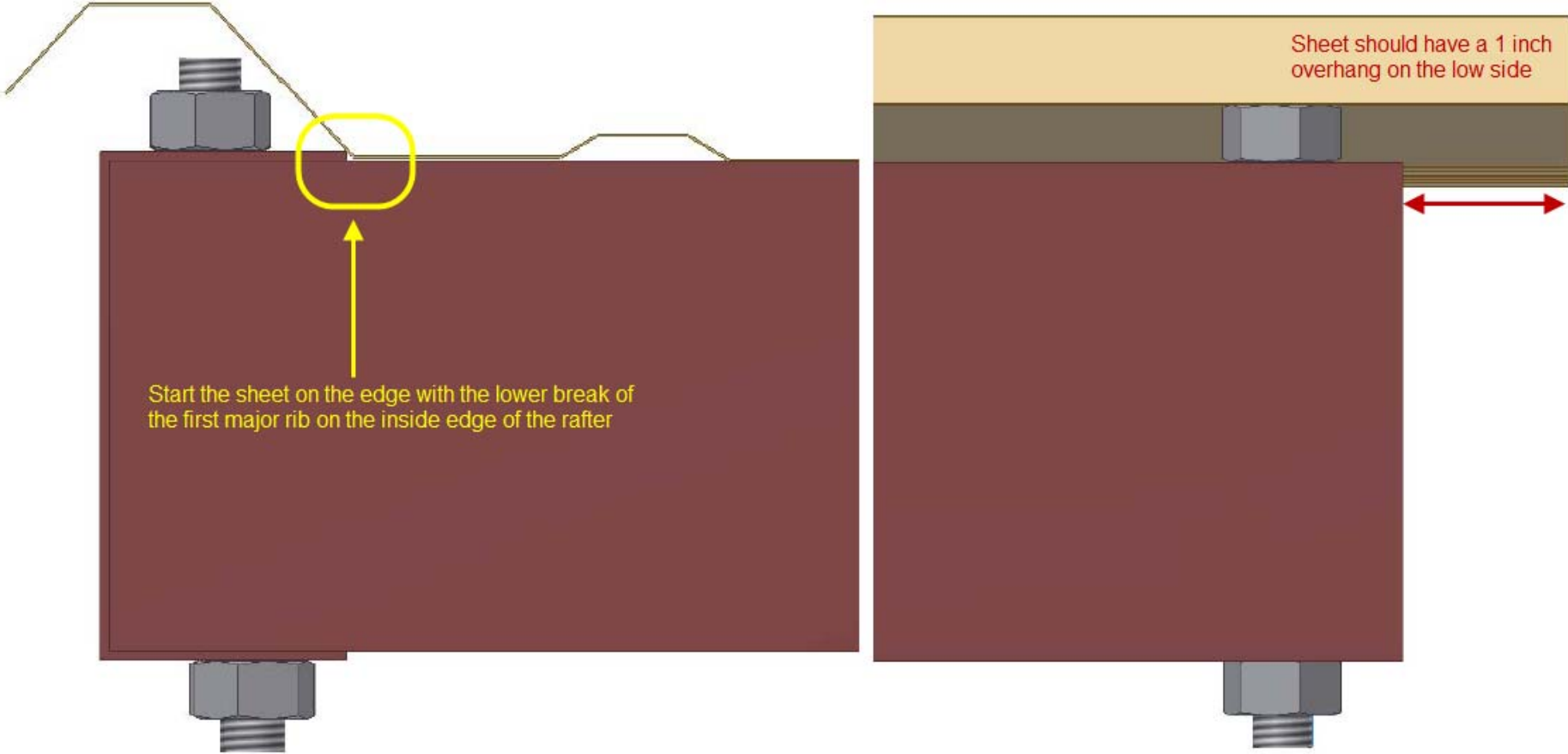
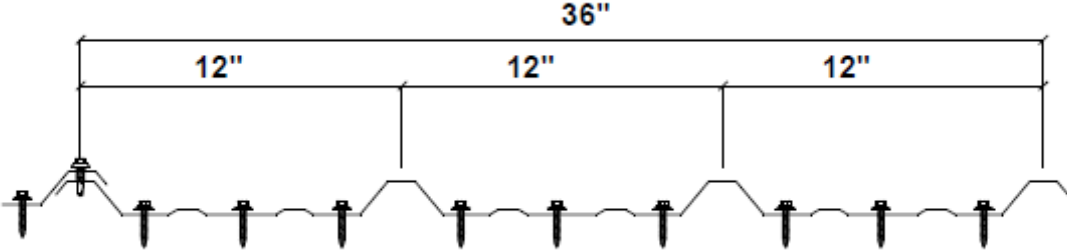
Purlin to Frame connection



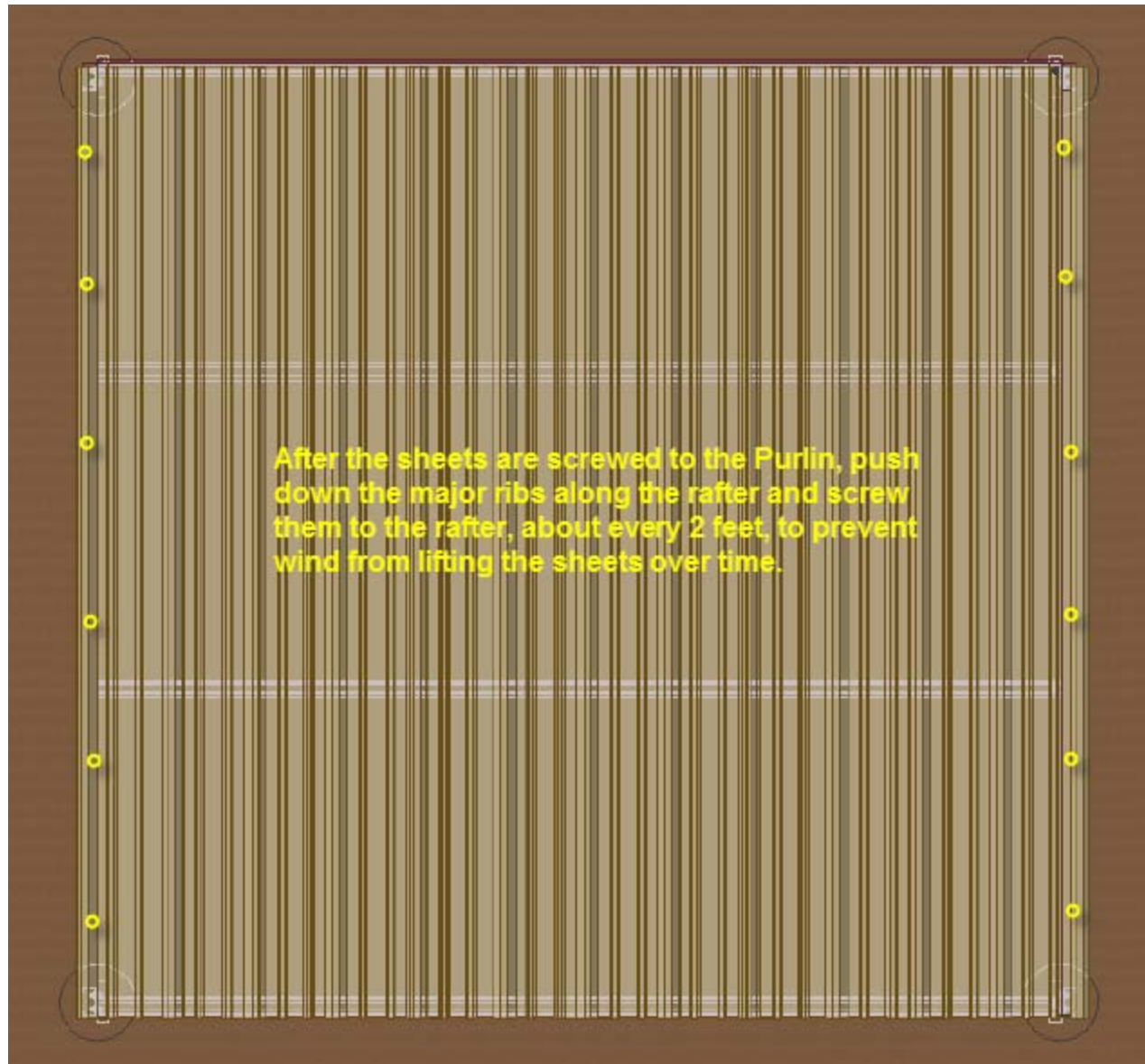
Make sure the assembly is square



Sheeting and Screw Pattern



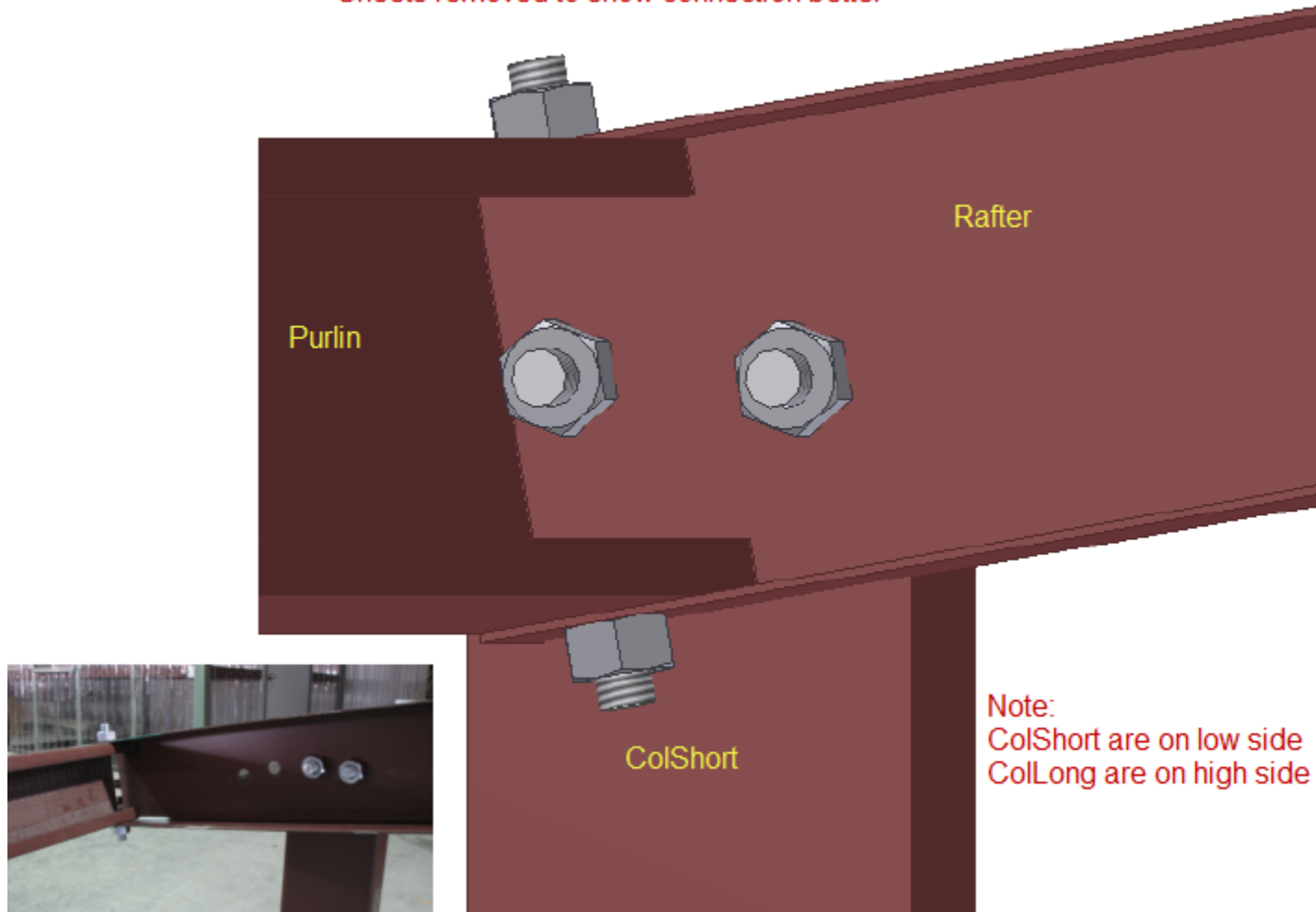
Attaching Major Ribs to the Rafters



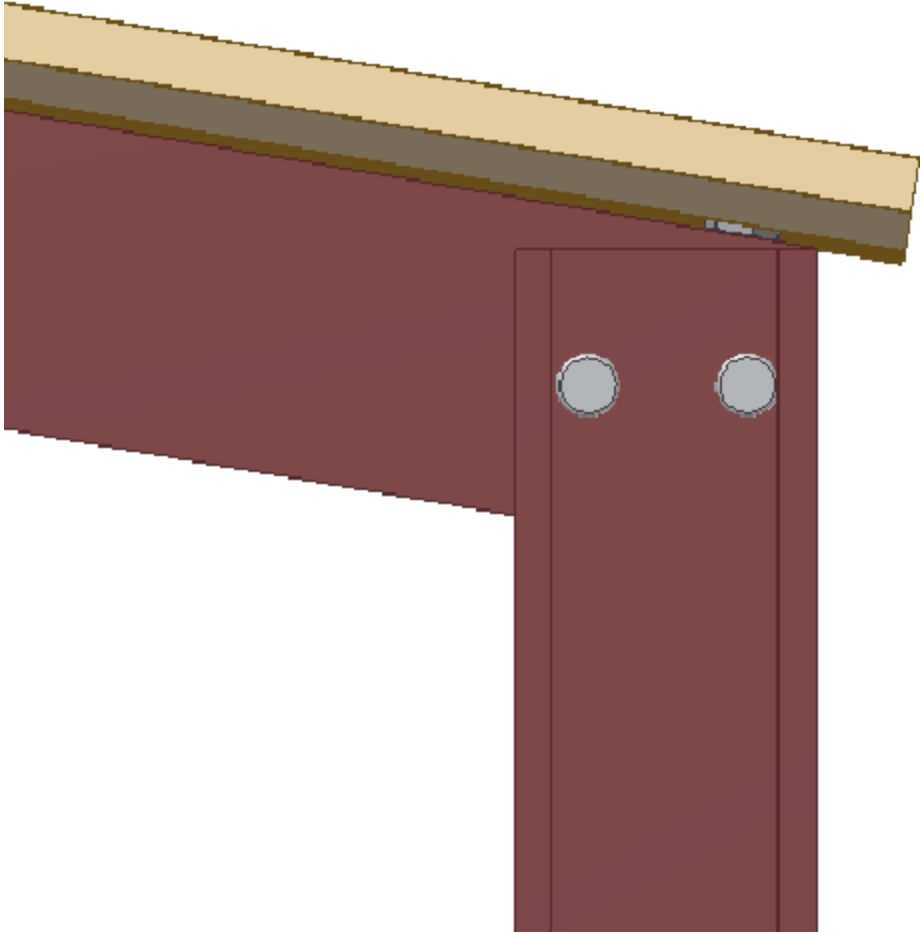
Add Legs to Sheeted Frame

There are two sets of holes in the rafter to make the rafter universal. You will either use the inside hole set or the outside hole set on the rafter depending on which side you want as the high side and which side will be the low side. Legs are universally punched as well so there is no top or bottom for ease of assembly

Sheets removed to show connection better

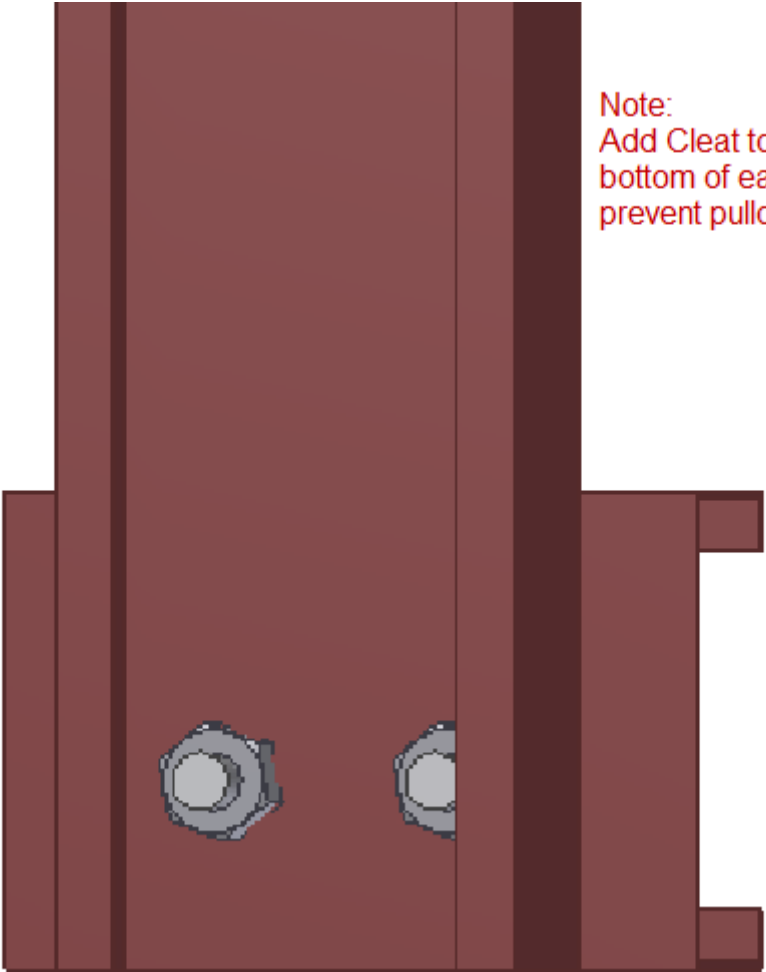


Low Side with Leg Attached



Add Cleat to Bottom of Each Leg

Each leg will be required to be concreted into the ground

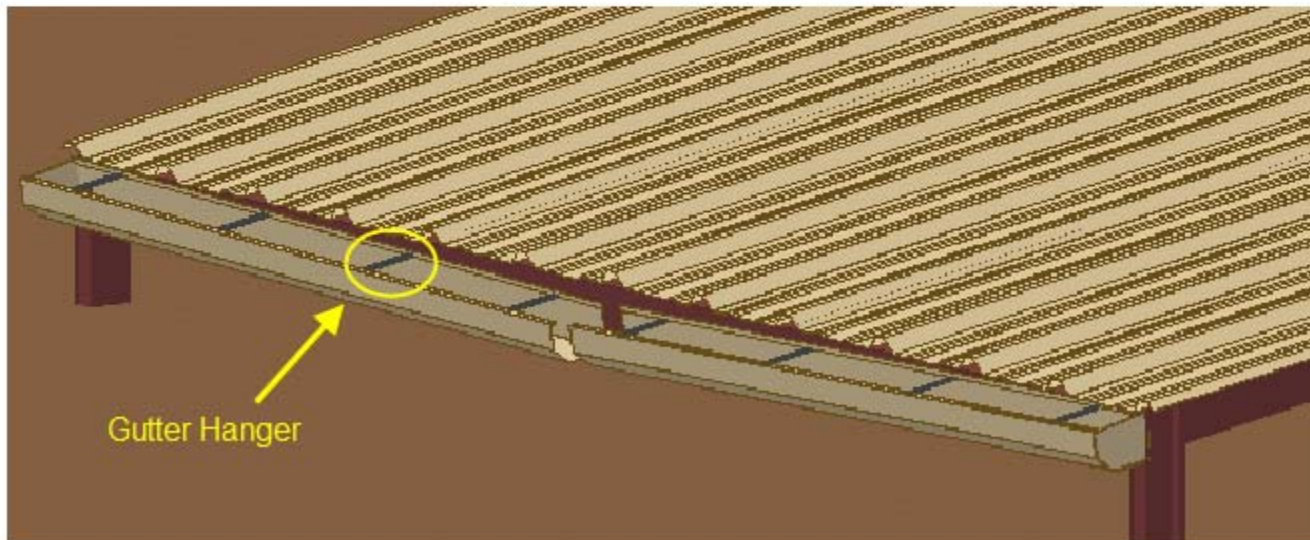


Note:
Add Cleat to the
bottom of each leg to
prevent pullout!

Add Gutter and End Caps to Low Side



Note:
Slope gutter to allow dew to drain. Attach gutter end caps with screws and then use gutter hangers to attach gutter to frame at a slope.



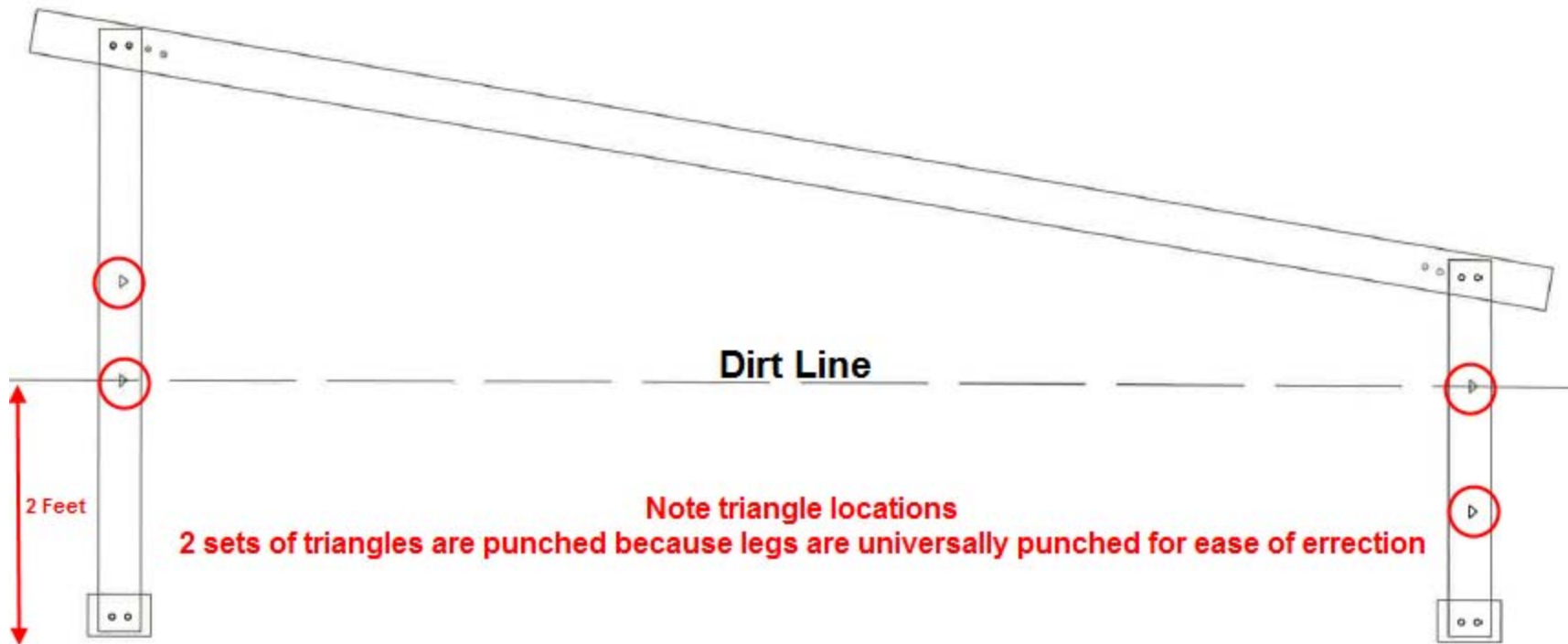
Leg Depth in Ground

(Each leg must be concreted 2 feet into the ground – this is marked with a triangle)



Leg Depth in Ground

(Each leg must be concreted 2 feet into the ground – this is marked with a triangle)



Finished Product (not in ground)



Finished Product (in ground)

